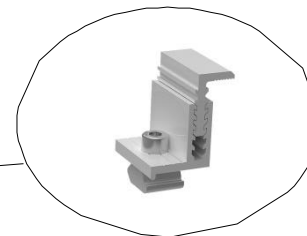


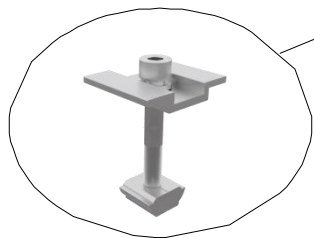
Suporte Alumínio
Fast Speed 200/400mm /
500MM entre Paineis



Autobrocante Fixação
suporte na telha



Terminal Final



Terminal
Intermediário



PROJETO

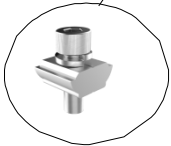
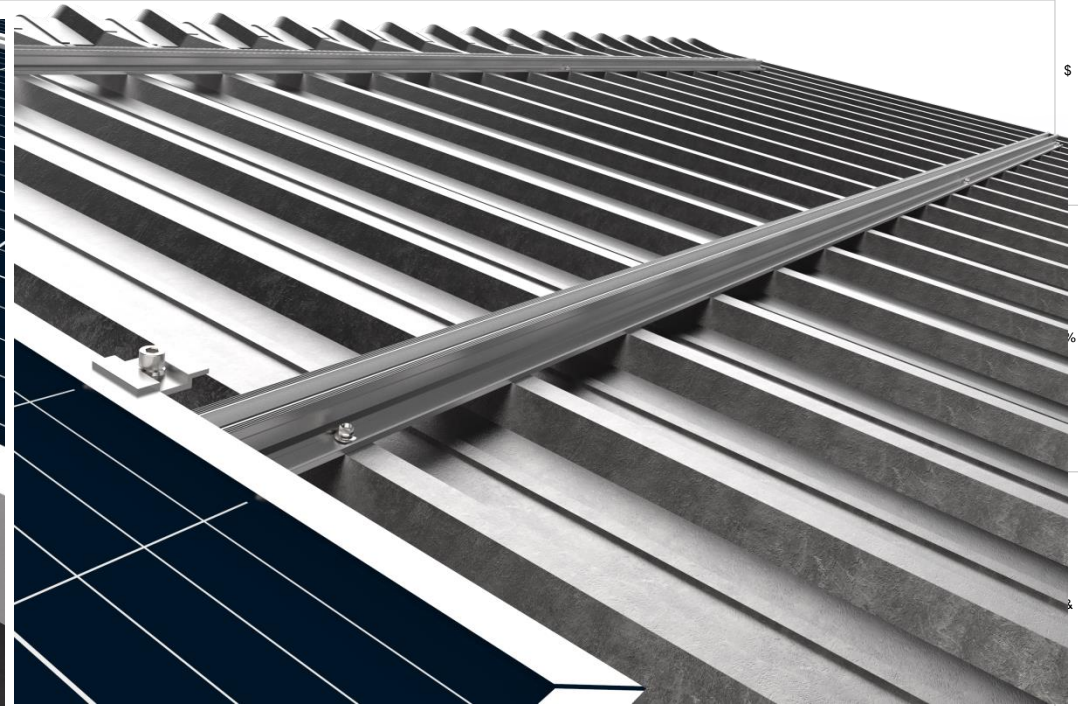
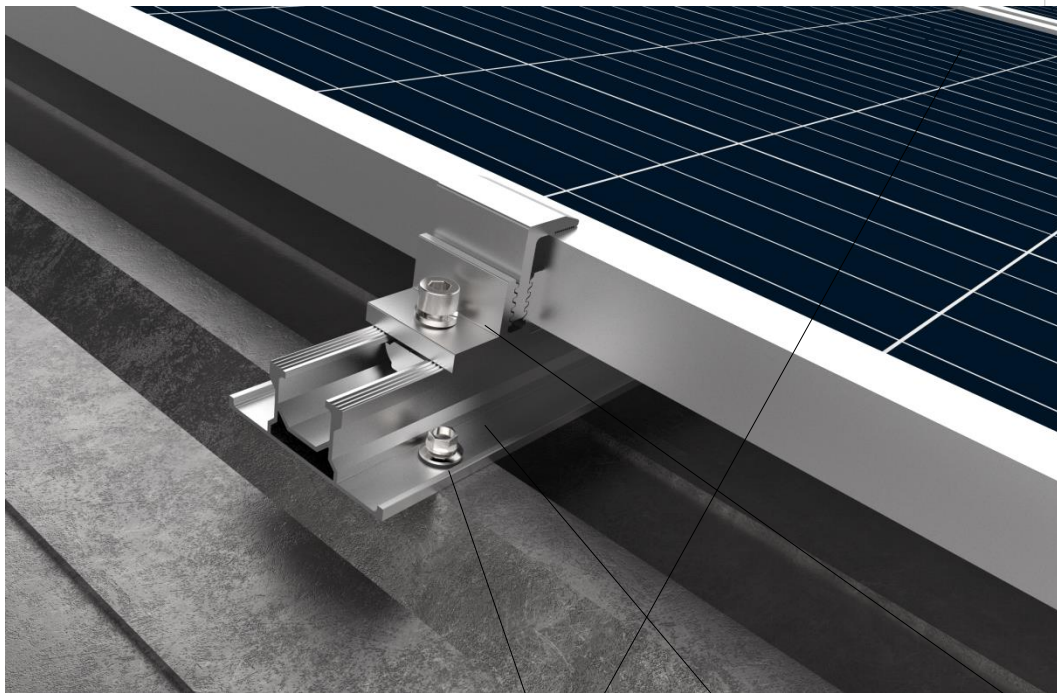
SISTEMA DE FIXAÇÃO FAST SPEED 6200MM

Projet	CARLOS BEBIANO	Assinaturas	Data
Rev	GEOVANA SOUZA		
Aprov	CARLOS BEBIANO		

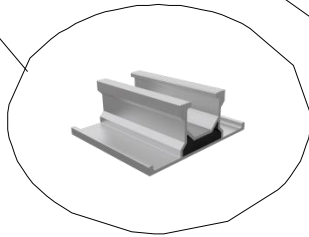
DETALHES	MATERIAL
	Alumínio Estrusado Aço Galvanizado a Fogo

NUMERO DO PROJETO	S.S.M – TM01
Referência	Montagem Sistema Fixação Painéis Solares
Scala	1:30

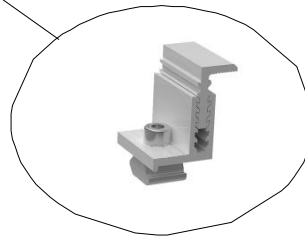
A3



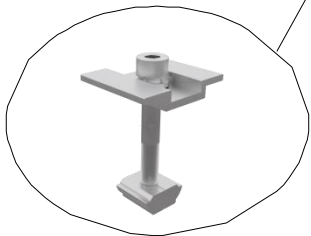
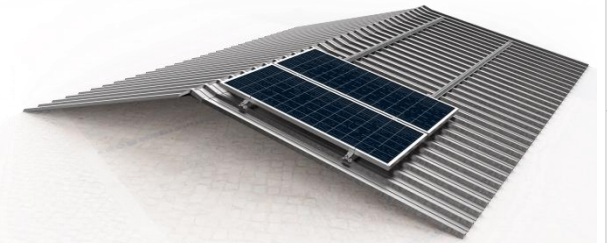
Porca Travante
Suporte no Perfil
Lateral



Suporte Alumínio
Telhado 1 furos



Terminal Final



Terminal
Intermediário



Auto Brocante SSM AT001

			
Projeto	CARLOS BEBIANO	Assinaturas	Data
Rev	GEOVANA SOUZA		
Aprov	CARLOS BEBIANO		

PROJETO

SISTEMA DE FIXAÇÃO FAST SPEED 6200MM

DETALHES	MATERIAL	NUMERO DO PROJETO	A3
	Alumínio Estrusado Aço Galvanizado a Fogo	S.S.M – TM01	
		Referência Montagem Sistema Fixação Painéis Solares	
		Scala 1:30	Página 1 de 2