



SV OUTDOOR LINE - LINHAS EM GABINETES E MÓDULOS

[SV OUTDOOR SERIES] SV4S / SV5S / SV6S / SV8S / SV10S



MANUTENÇÃO RÁPIDA E FÁCIL



MECANISMO DE ALINHAMENTO AUTOMÁTICO



5000 A 6000 NITS DE BRILHO



ALUMÍNIO

IMAGENS DO PRODUTO

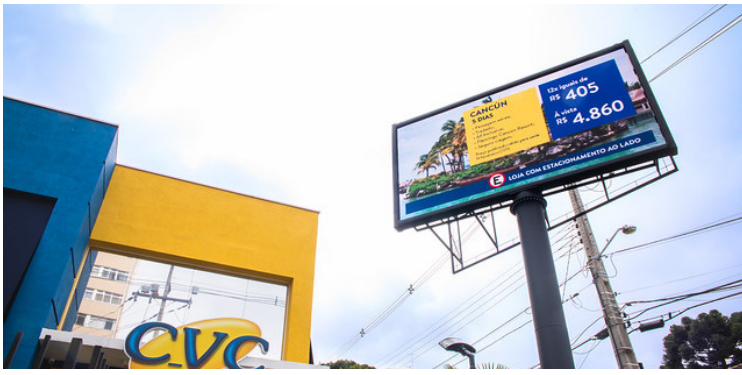


640x640



960x960





ESPECIFICAÇÕES TÉCNICAS

Item	SV2.5S	SV2.5S	SV3S	SV3S	SV4S	SV4S	SV5S	SV6S	SV8S	SV10-S
Pixel Config.	SMD	SMD	SMD	SMD	SMD	SMD	SMD	SMD	SMD	SMD
Pitch(mm)	2.5	2.5	3	3	4	4	5	6	8	10
Mod. Res. (WxH)	128x64	128x64	104x52	104x52	80x40	80x40	64x32	54x27	40x20	32x16
Mod. Size(mm)(WxHxD)	320x160x17	320x160x17	320x160x18	320x160x18	320x160x18	320x160x18	320x160x18	320x160x18	320x160x18	320x160x18
Module Weight(Kg)	0.48	0.48	0.48	0.48	0.46	0.46	0.5	0.47	0.46	0.49
Module Comp.(WxH)	3x6	2x4	3x6	2x4	3x6	2x4	3x6	3x6	3x6	3x6
Cabinet Res. (WxH)	384x384	256x256	312x312	208x208	240x240	160x160	192x192	162x162	120x120	96x96
Cabinet Size(mm)(WxHxD)	960x960x103	640x640x90	960x960x104	640x640x90	960x960x104	640x640x90	960x960x104	960x960x104	960x960x104	960x960x104
Unit Area(m ²)	0.9216	0.4096	0.9216	0.4096	0.9216	0.4096	0.9216	0.9216	0.9216	0.9216
Cabinet Weight(kg/m ²)	40	14	40	14	40	14	40	40	40	40
Pixel Dens. (pixel/m ²)	160000	160000	105625	105625	62500	62500	40000	28476	15625	10000
Surface Flatness(mm)	≤0.6	≤0.3	≤0.6	≤0.3	≤0.6	≤0.3	≤0.3	≤0.6	≤0.6	≤0.6
IP Grade (Front/Rear)	IP65/IP54	IP65/IP54	IP65/IP54	IP65/IP54	IP65/IP54	IP65/IP54	IP65/IP54	IP65/IP54	IP65/IP54	IP65/IP54
Brightness(nits)	4500-5000	4500-5000	4500-5000	4500-5000	4500-5000	4500-5000	5000-6000	5000-6000	5000-6000	5000-6000
Color Temperature(K)	3000-10000 Adjustable									
Horiz. Viewing Angle(°)	160	160	160	160	160	160	160	160	160	160
Vert. Viewing Angle(°)	140	140	140	140	140	140	140	140	140	140
Dev. LED Lum. Center	≤3%	≤3%	≤3%	≤3%	≤3%	≤3%	≤3%	≤3%	≤3%	≤3%
Brig. Uniformity	≥97%	≥97%	≥97%	≥97%	≥97%	≥97%	≥97%	≥97%	≥97%	≥97%
Chrom. Uniformity	±0.003Cx within									
Max. Power Cons. (W/m ²)	770	770	712	712	861	861	750	694	809	800
Av. Power Cons. (W/m ²)	257	257	237	237	287	287	250	231	270	265
Power Supply	AC100~240V(50/60Hz)									
Drive Mode	Constant Current Drive									
Frame Rate(Hz)	50&60	50&60	50&60	50&60	50&60	50&60	50&60	50&60	50&60	50&60
Refresh Rate(Hz)	≥3840/≥1920									
Lifetime(hrs)	100	100	100	100	100	100	100	100	100	100
Operation Temp.(C°)	-20~40	-20~40	-20~40	-20~40	-20~40	-20~40	-20~40	-20~40	-20~40	-20~40
Storage Temp.(C°)	-30~60	-30~60	-30~60	-30~60	-30~60	-30~60	-30~60	-30~60	-30~60	-30~60
Oper. Humidity(RH)	10~80% no condensation									
Stor. Humidity(RH)	10~80% no condensation									

Remark: Above data is subject to change without previous notice.

LEYARD

sales.brazil@leyardgroup.com / Phone: +55 (41) 3059-5100 / www.leyard.com.br

STOCK CODE: 300296