



*An Expert in Optical Communications*

# PON MIGRATION

---

## UNM2000

Version: A

Date: **Abr** 2019

Jefferson Mendes Pereira

FiberHome Telecommunication Technologies Co.,Ltda

## Version

Version	Description
A	Initial version

## Thank you for choosing our products.

We appreciate your business. Your satisfaction is our goal. We will provide you with comprehensive technical support and after-sales service. Please contact your local sales representative, service representative or distributor for any help needed at the contact information shown below.

### **Fiberhome Telecommunication Technologies Co., Ltd.**

Address: No. 67, Guanggu Chuangye Jie, Wuhan, Hubei, China

Zip code: 430073

Tel: +6 03 7960 0860/0884 (for Malaysia)

+91 98 9985 5448 (for South Asia)

+593 4 501 4529 (for South America)

Fax: +86 27 8717 8521

Website: <http://www.fiberhomegroup.com>

## Legal Notice

---

烽火通信®

**FiberHome**®

**GONST**®

**FONST**®

**e-Fim**®

**CiTRANS**®

**E-jet**®

**IBAS**®

**Freelink**®

**FonWeaver**®

**OTNPlanner**™

**SmartWeaver**™

are trademarks of FiberHome Telecommunication Technologies Co., Ltd. (Hereinafter referred to as FiberHome)

All brand names and product names used in this document are used for identification purposes only and are trademarks or registered trademarks of their respective holders.

All rights reserved

No part of this document (including the electronic version) may be reproduced or transmitted in any form or by any means without prior written permission from FiberHome.

Information in this document is subject to change without notice.

Contents

**1 PON MIGRATION .....4**

**1.1 PON Origem .....5**

**1.2 PON Destino .....6**

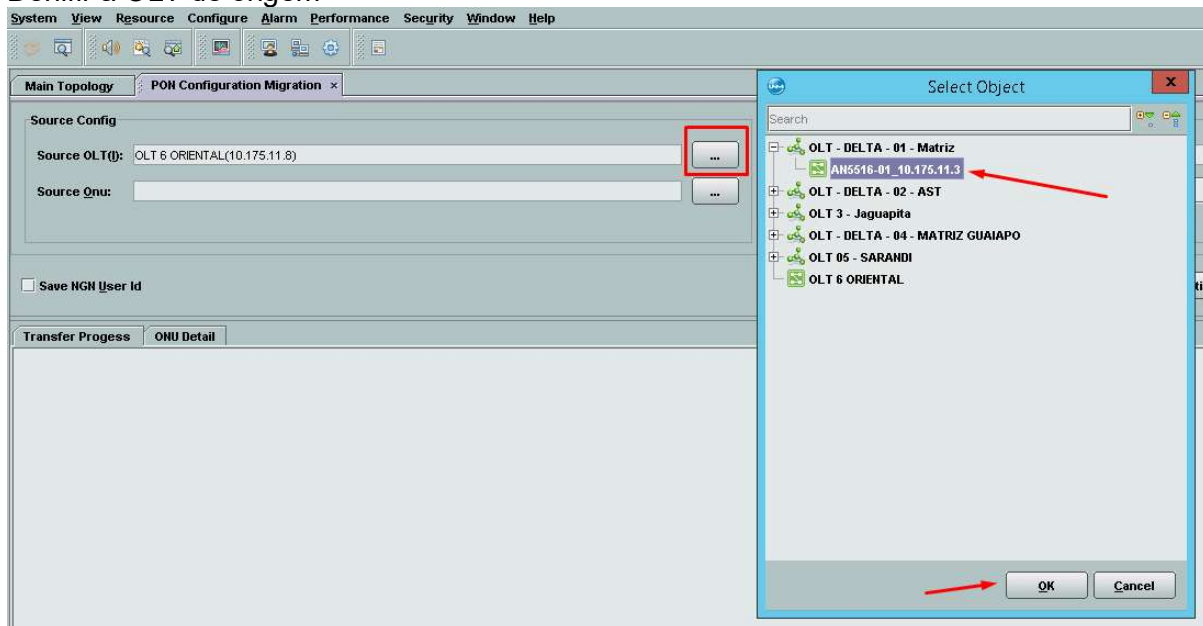
## PON MIGRATION

Acessar o UNM, a opção Configure>PON Configuration Migration

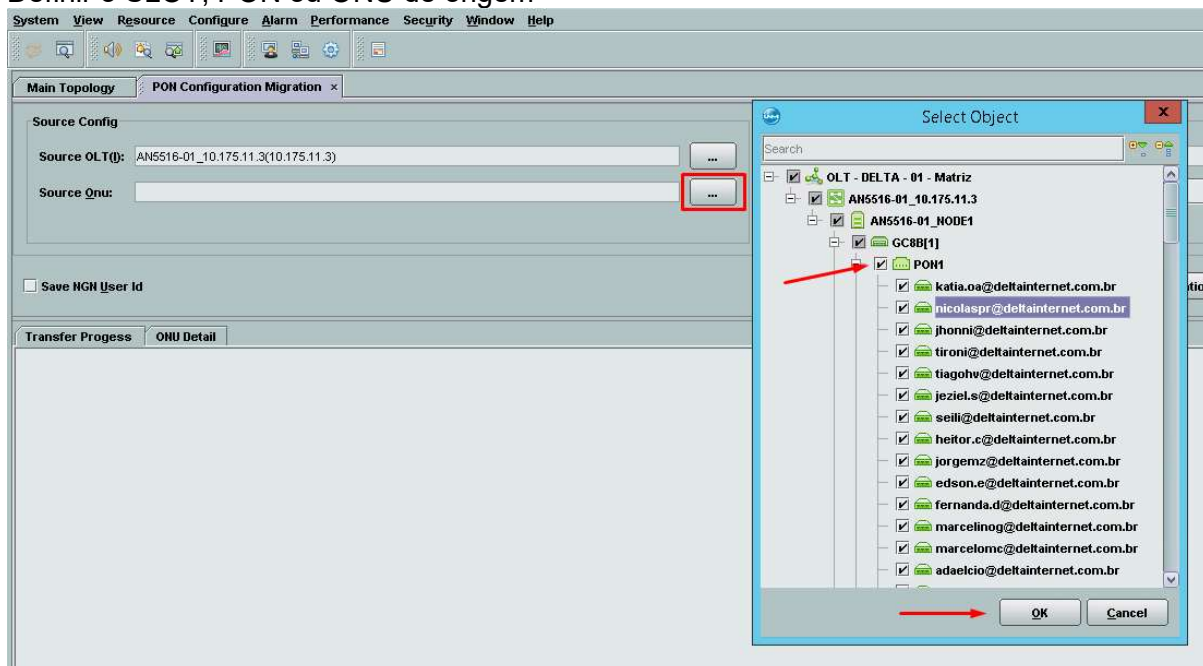


## PON ORIGEM

Definir a OLT de origem

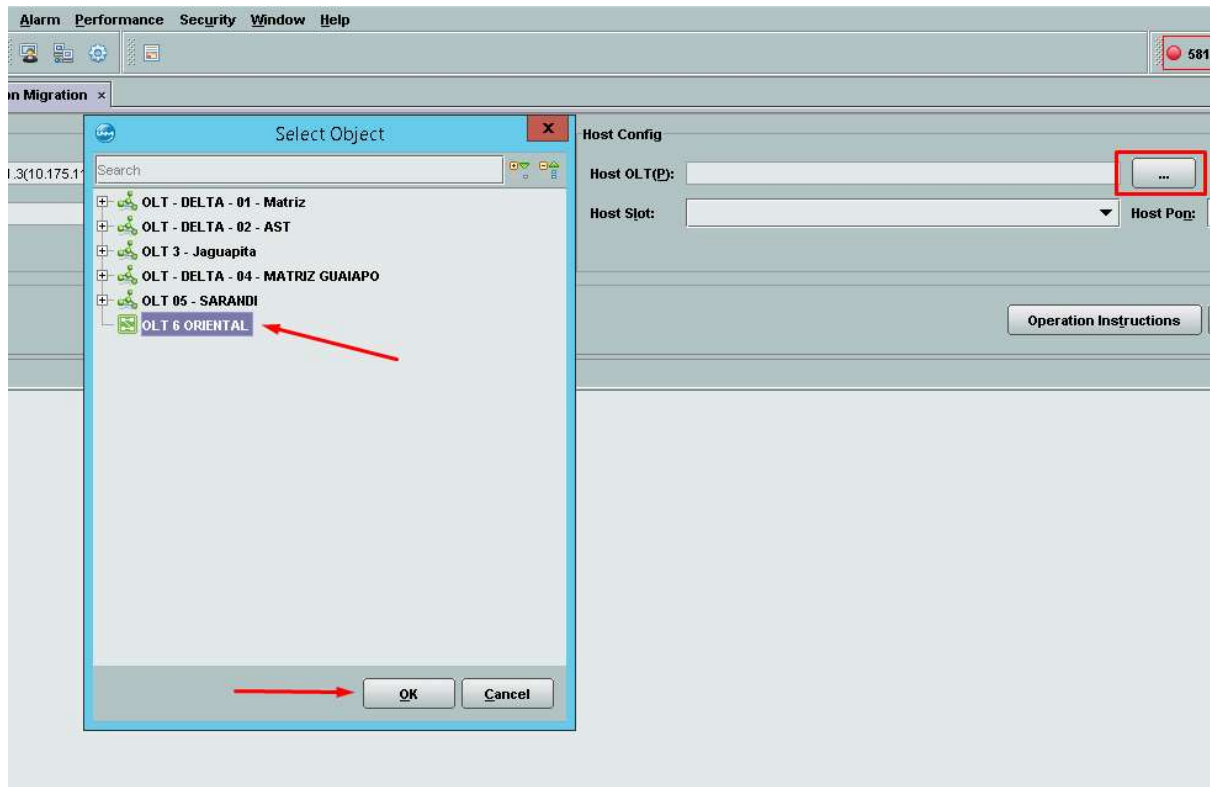


Definir o SLOT, PON ou ONU de origem



## PON DESTINO

Selecionar a OLT de destino



Selecionar a PON de destino e clicar no “Executar”

