



An Expert in Optical Communications

CREATE USER

UNM2000

Version: A

Date: **Abr** 2019

Jefferson Mendes Pereira

FiberHome Telecommunication Technologies Co.,Ltda

Version

Version	Description
A	Initial version

Thank you for choosing our products.

We appreciate your business. Your satisfaction is our goal. We will provide you with comprehensive technical support and after-sales service. Please contact your local sales representative, service representative or distributor for any help needed at the contact information shown below.

Fiberhome Telecommunication Technologies Co., Ltd.

Address: No. 67, Guanggu Chuangye Jie, Wuhan, Hubei, China

Zip code: 430073

Tel: +6 03 7960 0860/0884 (for Malaysia)

+91 98 9985 5448 (for South Asia)

+593 4 501 4529 (for South America)

Fax: +86 27 8717 8521

Website: <http://www.fiberhomegroup.com>

Legal Notice

烽火通信®

FiberHome®

GONST®

FONST®

e-Fim®

CiTRANS®

E-jet®

IBAS®

Freelink®

FonWeaver®

OTNPlanner™

SmartWeaver™

are trademarks of FiberHome Telecommunication Technologies Co., Ltd. (Hereinafter referred to as FiberHome)

All brand names and product names used in this document are used for identification purposes only and are trademarks or registered trademarks of their respective holders.

All rights reserved

No part of this document (including the electronic version) may be reproduced or transmitted in any form or by any means without prior written permission from FiberHome.

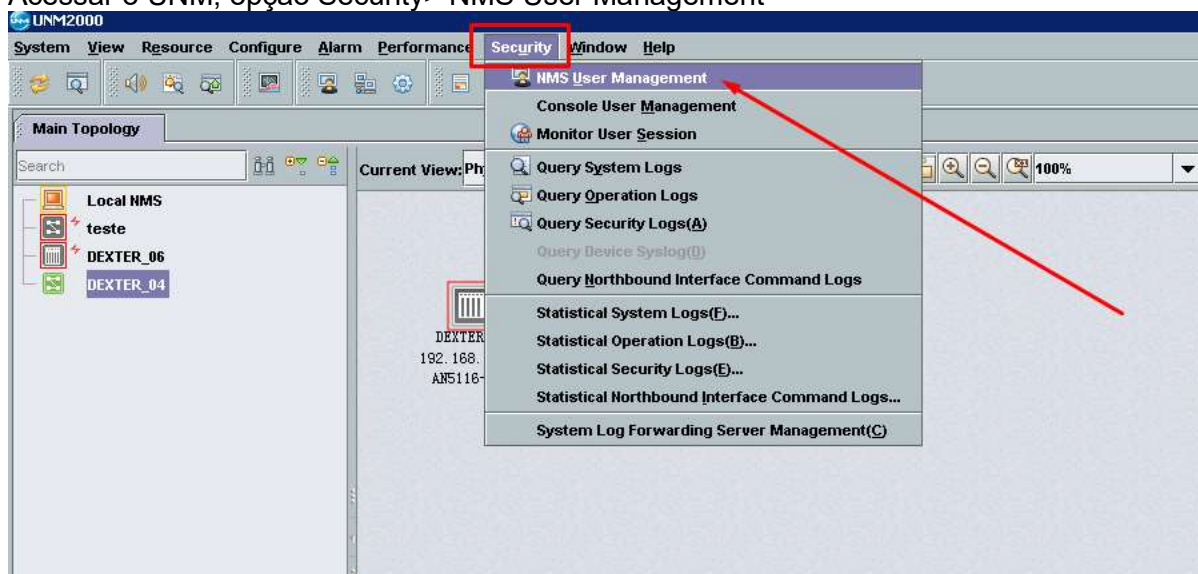
Information in this document is subject to change without notice.

Contents

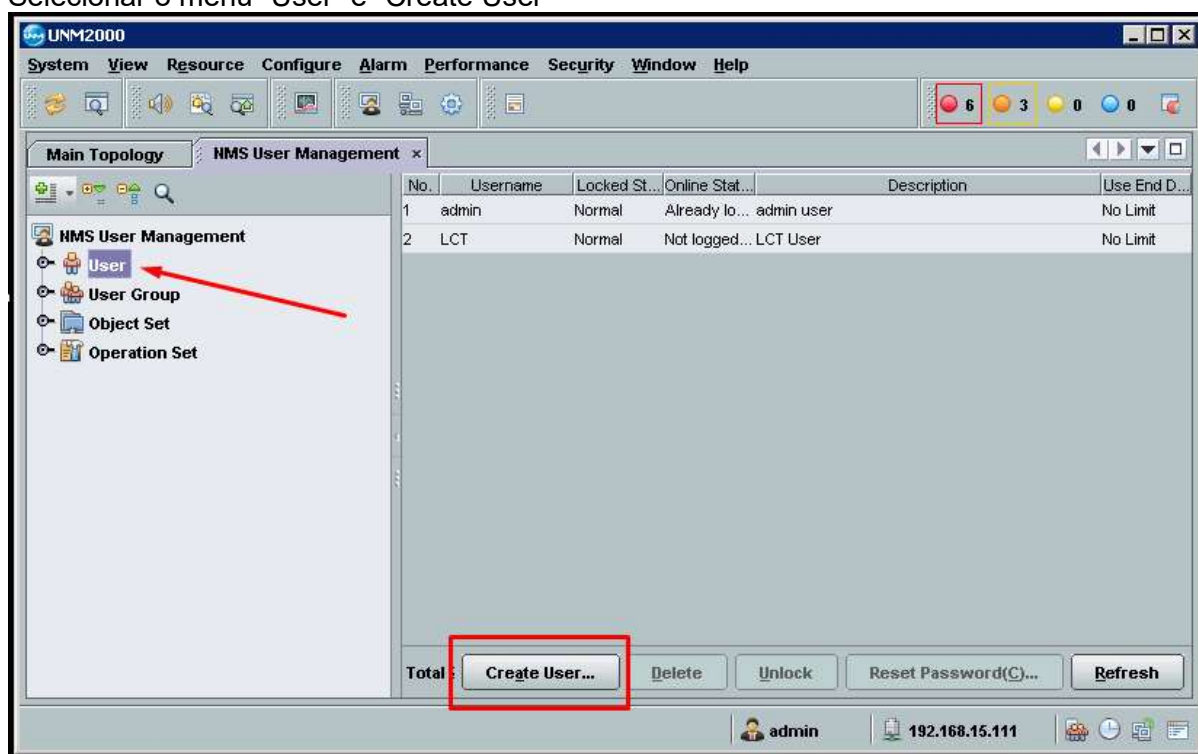
1 CRIAR USUARIO	4
1.1 DEFINIR DADOS DE LOGGIN	5
1.2 DEFINIR PERMISSAO.....	6
1.3 DEFINIR CRIAÇÃO.....	7

CRIAR USUARIO

Acessar o UNM, opção Security> NMS User Management



Selecionar o menu "User" e "Create User"

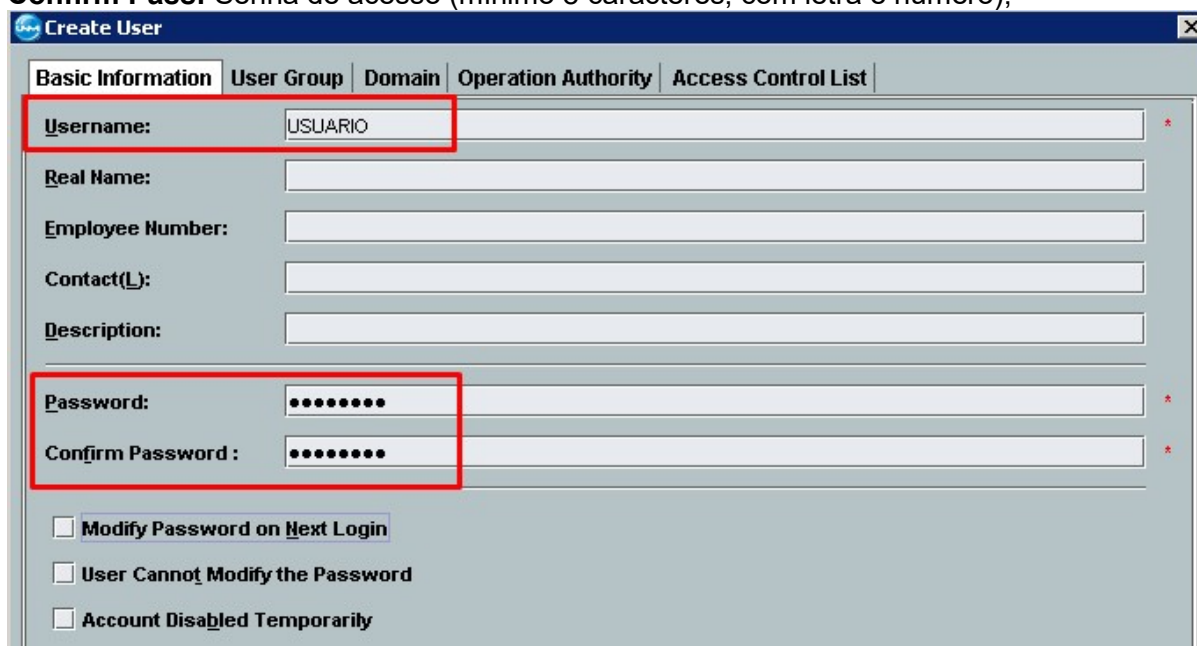


DEFINIR DADOS DE LOGIN

Username: Nome do usuário (mínimo 6 caracteres);

Password: Senha de acesso (mínimo 8 caracteres, com letra e número);

Confirm Pass: Senha de acesso (mínimo 8 caracteres, com letra e número);



Create User

Basic Information | User Group | Domain | Operation Authority | Access Control List

Username: USUARIO

Real Name:

Employee Number:

Contact(L):

Description:

Password:

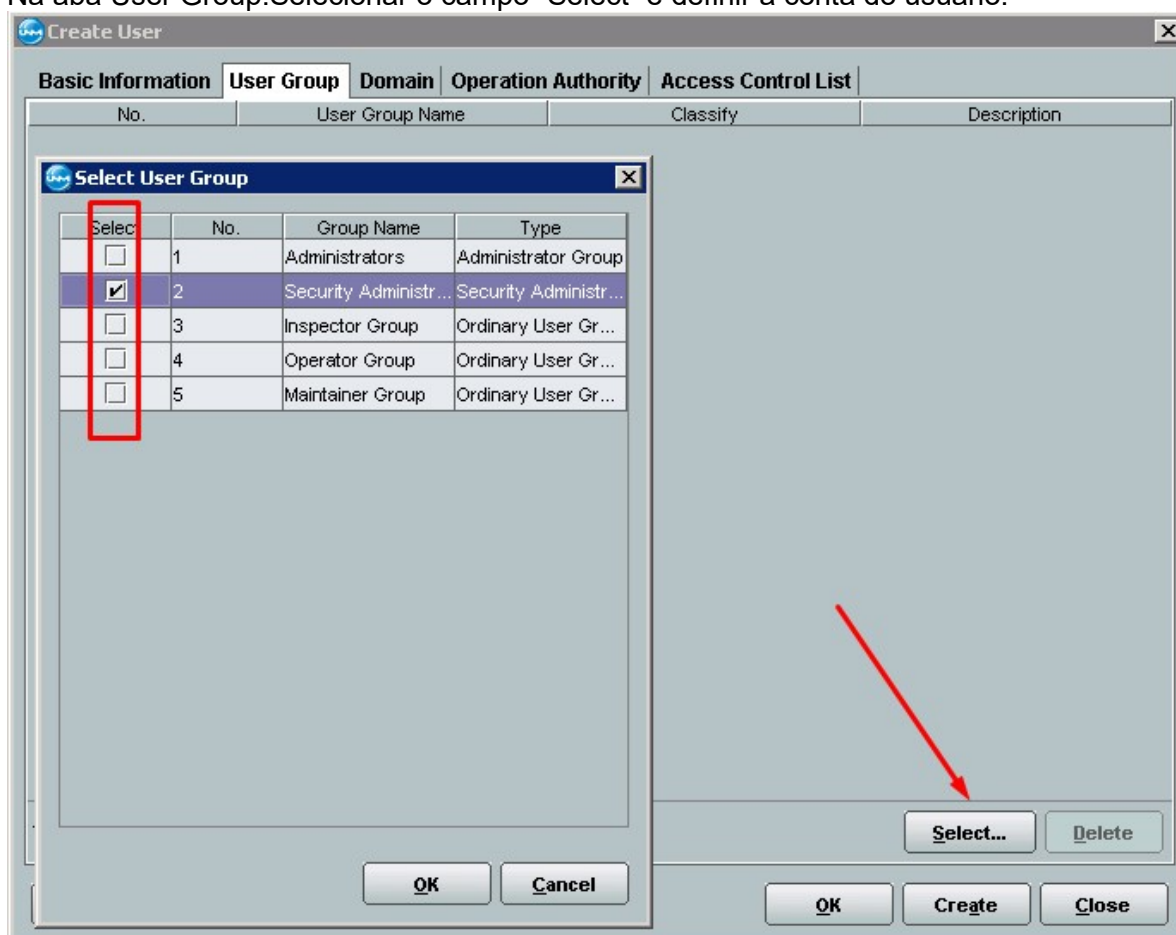
Confirm Password :

☐ **Modify Password on Next Login**

☐ **User Cannot Modify the Password**

☐ **Account Disabled Temporarily**

Na aba User Group. Selecionar o campo "Select" e definir a conta do usuário.



Create User

Basic Information | **User Group** | Domain | Operation Authority | Access Control List

No.	User Group Name	Classify	Description
1	Administrators	Administrator Group	
2	Security Administr...	Security Administr...	
3	Inspector Group	Ordinary User Gr...	
4	Operator Group	Ordinary User Gr...	
5	Maintainer Group	Ordinary User Gr...	

Select User Group

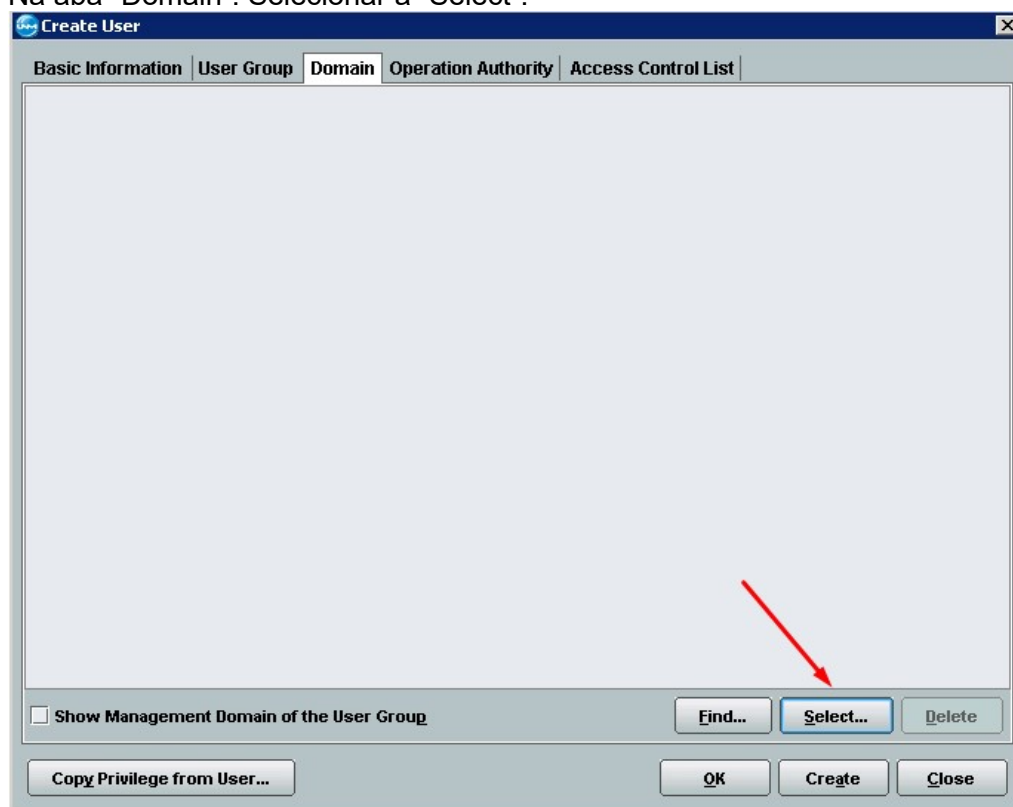
Select	No.	Group Name	Type
<input type="checkbox"/>	1	Administrators	Administrator Group
<input checked="" type="checkbox"/>	2	Security Administr...	Security Administr...
<input type="checkbox"/>	3	Inspector Group	Ordinary User Gr...
<input type="checkbox"/>	4	Operator Group	Ordinary User Gr...
<input type="checkbox"/>	5	Maintainer Group	Ordinary User Gr...

Select... **Delete**

OK **Cancel** **OK** **Create** **Close**

DEFINIR PERMISSAO

Na aba "Domain". Selecionar a "Select".



Selecionar os equipamentos que o usuário terá acesso.



FINALIZAR CRIAÇÃO

Finalizar a criação na opção "Create".

